

LEGEND

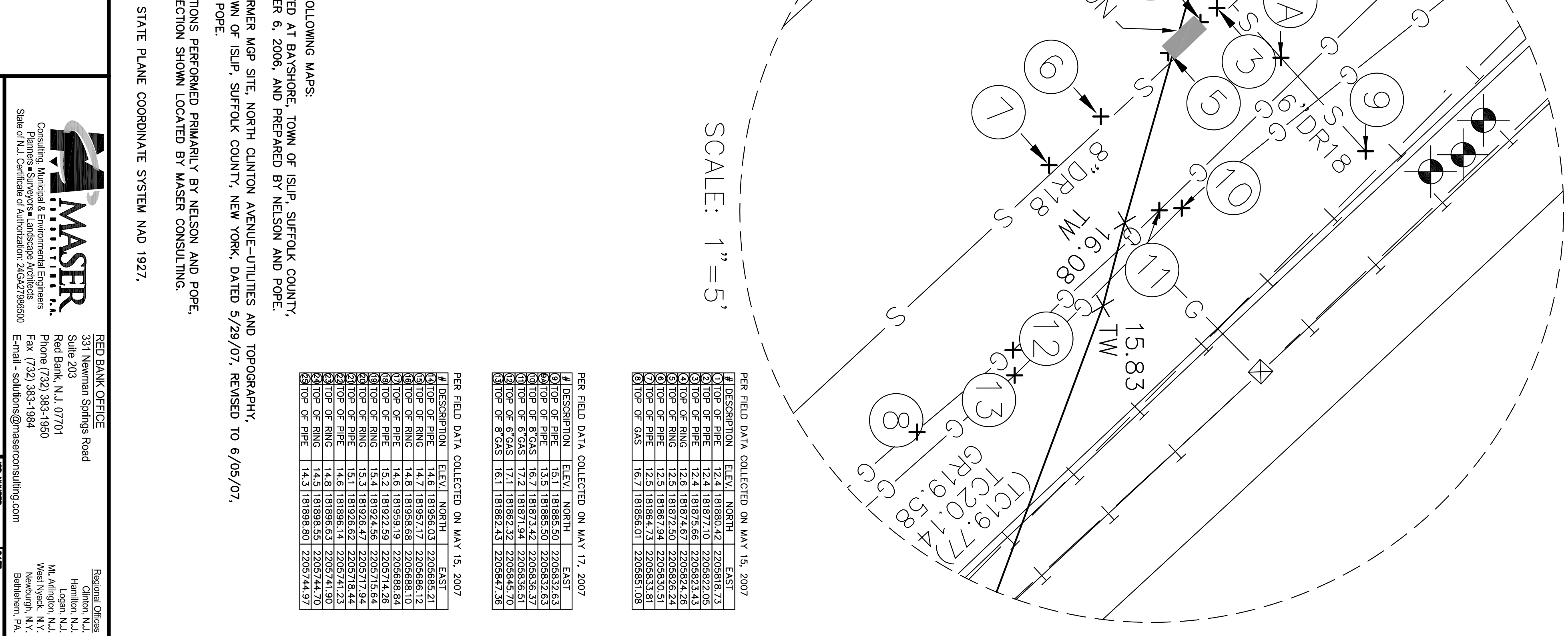
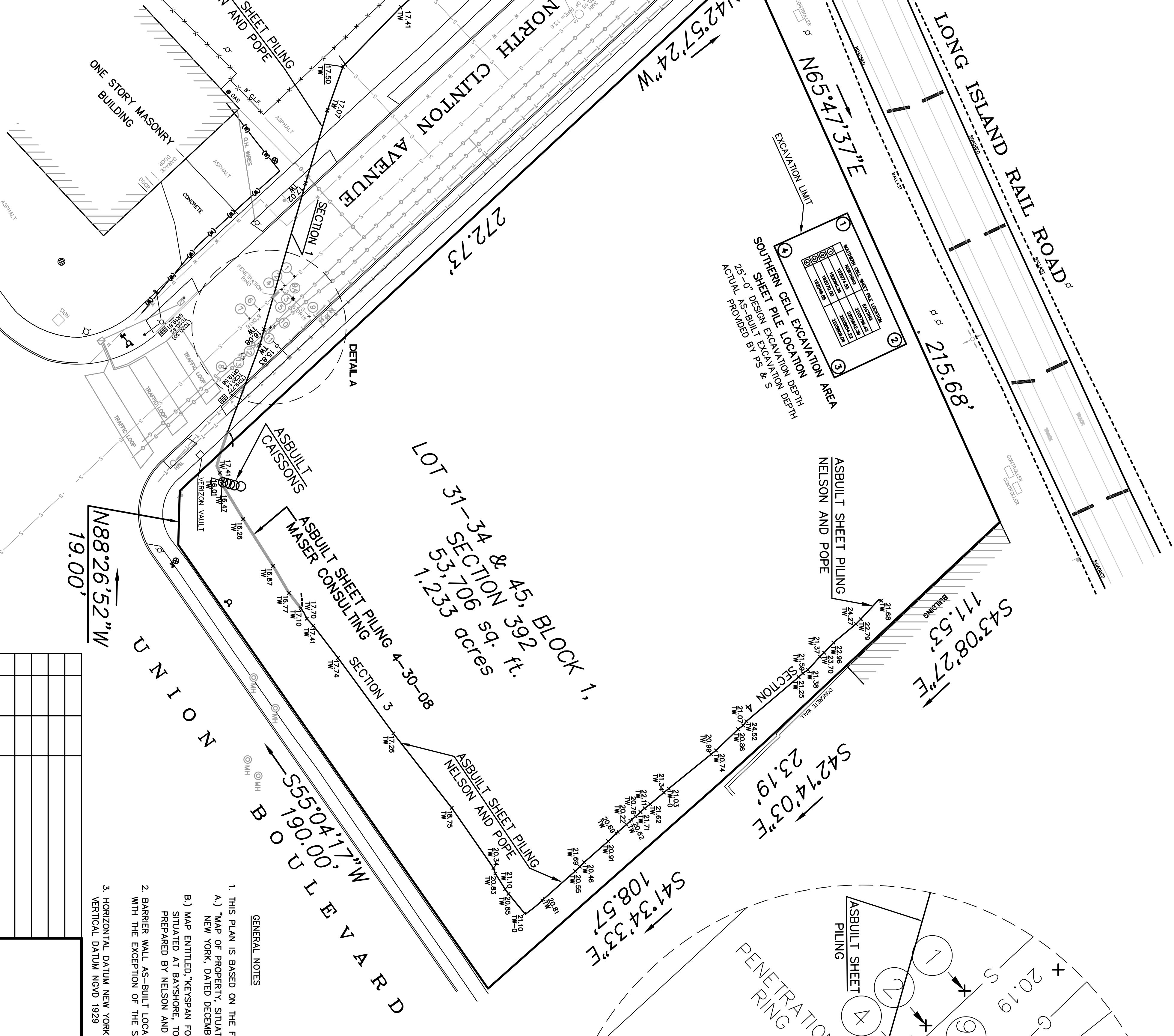
- X—X— FENCES
- WATER METER
- △—△— HYDRANT
- SIGN
- M H MANHOLE
- D H DRAIN INLET
- T B TRAFFIC BOX
- S S SIGNAL POLE
- L P LIGHT POLE
- U P UTILITY POLE
- U G UTILITY GUY
- T M TELEPHONE MANHOLE
- C B CATCH BASIN
- — RAILROAD TIE
- — FENCE
- — TELEPHONE
- — SANITARY
- — GAS
- — WATER
- (M) — WATER - NEW LOCATION: MAY 15, 2007
- — TRAFFIC
- T B TRAFFIC BOX
- M V GAS VALVE
- W V WATER VALVE
- M W MONITORING WELL
- S M SANITARY MANHOLE
- T W TOP OF WALL

FIELD DATE : APRIL 25, 2007 (DRIVE LINE LOCATION)
MAY 8, 2007 (DRIVE LINE EXCAVATION)
MAY 18, 2007 (DRIVE LINE LOCATION)
MAY 22, 2007 (SOUTHERN CELL AND DRIVE LINE EXCAVATION)
MAY 23, 2007 (DRIVE LINE LOCATION)
JUNE 1, 2007 (DRIVE LINE LOCATION)

FIELD DATE: UTILITIES AND ROAD TOPS: APRIL 25, 2007
FIELD DATE: NEW LOCATION OF WATER, TOP OF PIPE ELEVATIONS AS SHOWN: MAY 15, 2007

UNDERGROUND UTILITY LOCATIONS AS PER UTILITY MARK OUT, EXCAVATION AND EXTRACT INFORMATION.

UNDERGROUND, OVERHEAD AND GROUND LEVEL UTILITIES ARE NOT GUARANTEED AS TO ACCURACY, EXACT LOCATION, TYPE OR USE. ACTIVE OR INACTIVE, VERTICALLY AS TO UNDERGROUND UTILITY AGENCIES AND/OR PUBLIC OR PRIVATE UTILITY COMPANIES PRIOR TO CONSTRUCTION.



PER FIELD DATA COLLECTED ON MAY 15, 2007

#	DESCRIPTION	ELEV.	NORTH	EAST
1	TOP OF PIPE	12.4	181880.42	2205818.73
2	TOP OF PIPE	12.4	181877.10	2205822.05
3	TOP OF PIPE	12.6	181874.87	2205824.26
4	TOP OF PIPE	12.5	181872.50	2205826.24
5	TOP OF PIPE	12.5	181870.14	2205828.51
6	TOP OF PIPE	12.5	181867.74	2205830.51
7	TOP OF PIPE	12.5	181865.31	2205831.81
8	TOP OF PIPE	16.1	181859.51	2205851.18

PER FIELD DATA COLLECTED ON MAY 17, 2007

#	DESCRIPTION	ELEV.	NORTH	EAST
1	TOP OF PIPE	14.6	181956.03	2205885.21
2	TOP OF PIPE	14.6	181952.72	2205888.12
3	TOP OF PIPE	14.6	181949.39	2205891.26
4	TOP OF PIPE	14.6	181945.99	2205894.64
5	TOP OF PIPE	15.2	181922.59	2205714.28
6	TOP OF PIPE	15.4	181924.56	2205715.64
7	TOP OF PIPE	15.1	181920.42	2205717.84
8	TOP OF PIPE	14.8	181916.42	2205719.84
9	TOP OF PIPE	14.6	181896.14	2205741.23
10	TOP OF PIPE	14.8	181896.63	2205741.90
11	TOP OF PIPE	14.5	181888.55	2205744.79
12	TOP OF PIPE	14.3	181893.50	2205744.93

PER FIELD DATA COLLECTED ON MAY 15, 2007

#	DESCRIPTION	ELEV.	NORTH	EAST
1	TOP OF PIPE	14.6	181956.03	2205885.21
2	TOP OF PIPE	14.6	181952.72	2205888.12
3	TOP OF PIPE	14.6	181949.39	2205891.26
4	TOP OF PIPE	14.6	181945.99	2205894.64
5	TOP OF PIPE	15.2	181922.59	2205714.28
6	TOP OF PIPE	15.4	181924.56	2205715.64
7	TOP OF PIPE	15.1	181920.42	2205717.84
8	TOP OF PIPE	14.8	181916.42	2205719.84
9	TOP OF PIPE	14.6	181896.14	2205741.23
10	TOP OF PIPE	14.8	181896.63	2205741.90
11	TOP OF PIPE	14.5	181888.55	2205744.79
12	TOP OF PIPE	14.3	181893.50	2205744.93

- GENERAL NOTES**
- THIS PLAN IS BASED ON THE FOLLOWING MAPS:
 - MAP OF PROPERTY, SITUATED AT BAYSHORE, TOWN OF ISLIP, SUFFOLK COUNTY, NEW YORK, DATED DECEMBER 6, 2006, AND PREPARED BY NELSON AND POPE.
 - MAP ENTITLED, 'KEYSPAN FORMER MGP SITE, NORTH CLINTON AVENUE-UTILITIES AND TOPOGRAPHY, SITUATED AT BAYSHORE, TOWN OF ISLIP, SUFFOLK COUNTY, NEW YORK, DATED 5/29/07, REVISED TO 6/08/07, PREPARED BY NELSON AND POPE.
 - BARRIER WALL AS-BUILT LOCATIONS PERFORMED PRIMARILY BY NELSON AND POPE, WITH THE EXCEPTION OF THE SECTION SHOWN LOCATED BY MASER CONSULTING.
 - HORIZONTAL DATUM NEW YORK STATE PLANE COORDINATE SYSTEM NAD 1927.

REV.	DATE	DESIGNED BY	DESCRIPTION
1.	8/04/08	RTH	GENERAL REVISIONS
2.	8/21/08	RTH	GENERAL REVISIONS
3.	11/03/08	RTH	GENERAL REVISIONS
4.	11/20/08	DMJ	GENERAL REVISIONS

EDUARDO E. PONZIO
LAND SURVEYOR LIC. NO. 060922-1

MASER
Consulting, Mechanical & Environmental Engineers
331 Newman Springs Road
Suite 203
Rosedale, N.Y. 11423
Phone (732) 383-1950
Fax (732) 383-1994
Email: esolunas@maseronline.com

BARRIER WALL, SOUTHERN CELL, AND UTILITY LOCATION SURVEY
FOR
NATIONAL GRID US
BAY SHORE FORMER MANUFACTURED GAS PLANT SITE
PHASE 1, OI-1 REMEDIAL ACTIONS
SUFFOLK COUNTY, NEW YORK

RED BANK OFFICE
331 Newman Springs Road
Suite 203
Rosedale, N.Y. 07071
Phone (732) 383-1950
Fax (732) 383-1994
Email: esolunas@maseronline.com

Regional Offices
Clinton, N.J.
Hempstead, N.J.
Mt. Arlington, N.J.
West Nyack, N.Y.
Sethonham, Pa.

JOB NUMBER: 08000278A
DATE: JULY 7, 2008
SCALE: 1"=20'
LATEST REVISION: NOV. 20, 2008
SHEET NUMBER: RBS1005913
DRAWN BY: RTH
CHECKED BY: RTH

2 of 3